

**BALDOR® • RELIANCE** 

**Product Information Packet**

**CEBM3558T-D**

**2HP, 1750RPM, 3PH, 60HZ, 145TYC, 3528M, TEFC, F**

| Part Detail |        |             |            |             |        |               |            |
|-------------|--------|-------------|------------|-------------|--------|---------------|------------|
| Revision:   | R      | Status:     | PRD/A      | Change #:   |        | Proprietary:  | No         |
| Type:       | AC     | Elec. Spec: | 35WGP562   | CD Diagram: | CD0005 | Mfg Plant:    |            |
| Mech. Spec: | 35X157 | Layout:     | 35LYX157   | Poles:      | 04     | Created Date: | 06-16-2010 |
| Base:       | RG     | Eff. Date:  | 08-22-2019 | Leads:      | 9#18   |               |            |

| Specs                           |                  |                                |                       |
|---------------------------------|------------------|--------------------------------|-----------------------|
| Catalog Number:                 | CEBM3558T-D      | Heater Indicator:              | No Heater             |
| Enclosure:                      | TEFC             | Insulation Class:              | F                     |
| Frame:                          | 145TCY           | Inverter Code:                 | Inverter Ready        |
| Frame Material:                 | Steel            | KVA Code:                      | L                     |
| Output @ Frequency:             | 2.000 HP @ 60 HZ | Lifting Lugs:                  | No Lifting Lugs       |
| Synchronous Speed @ Frequency:  | 1800 RPM @ 60 HZ | Locked Bearing Indicator:      | Locked Bearing        |
| Voltage @ Frequency:            | 460.0 V @ 60 HZ  | Motor Lead Quantity/Wire Size: | 9 @ 18 AWG            |
|                                 | 230.0 V @ 60 HZ  | Motor Lead Exit:               | Ko Box                |
| XP Class and Group:             | None             | Motor Lead Termination:        | Flying Leads          |
| XP Division:                    | Not Applicable   | Motor Type:                    | 3528M                 |
| Agency Approvals:               | CE               | Mounting Arrangement:          | F3                    |
|                                 | CSA              | Power Factor:                  | 75                    |
|                                 | CSA EEV          | Product Family:                | General Purpose       |
|                                 | UR               | Product Type:                  | D-SERIES BRAKE MOTORS |
|                                 | WEEE             | Pulley End Bearing Type:       | Ball                  |
| Auxillary Box:                  | No Auxillary Box | Pulley Face Code:              | C-Face                |
| Auxillary Box Lead Termination: | None             | Pulley Shaft Indicator:        | Standard              |
| Base Indicator:                 | Rigid            | Rodent Screen:                 | None                  |

|                                       |                             |                                    |                     |
|---------------------------------------|-----------------------------|------------------------------------|---------------------|
| <b>Bearing Grease Type:</b>           | Polyrex EM (-20F +300F)     | <b>Shaft Extension Location:</b>   | Pulley End          |
| <b>Blower:</b>                        | None                        | <b>Shaft Ground Indicator:</b>     | No Shaft Grounding  |
| <b>Current @ Voltage:</b>             | 5.900 A @ 208.0 V           | <b>Shaft Rotation:</b>             | Reversible          |
|                                       | 5.800 A @ 230.0 V           | <b>Shaft Slinger Indicator:</b>    | No Slinger          |
|                                       | 2.900 A @ 460.0 V           | <b>Speed Code:</b>                 | Single Speed        |
| <b>Design Code:</b>                   | B                           | <b>Motor Standards:</b>            | NEMA                |
| <b>Drip Cover:</b>                    | No Drip Cover               | <b>Starting Method:</b>            | Direct on line      |
| <b>Duty Rating:</b>                   | CONT                        | <b>Thermal Device - Bearing:</b>   | None                |
| <b>Electrically Isolated Bearing:</b> | Not Electrically Isolated   | <b>Thermal Device - Winding:</b>   | None                |
| <b>Feedback Device:</b>               | NO FEEDBACK                 | <b>Vibration Sensor Indicator:</b> | No Vibration Sensor |
| <b>Front Face Code:</b>               | Fan Housing Cover For Brake | <b>Winding Thermal 1:</b>          | None                |
| <b>Front Shaft Indicator:</b>         | None                        | <b>Winding Thermal 2:</b>          | None                |

|                          |              |  |             |      |  |                       |     |  |           |   |
|--------------------------|--------------|--|-------------|------|--|-----------------------|-----|--|-----------|---|
| <b>Nameplate NP2934L</b> |              |  |             |      |  |                       |     |  |           |   |
| <b>CAT.NO.</b>           | CEBM3558T-D  |  |             |      |  |                       |     |  |           |   |
| <b>SPEC.</b>             | 35X157P562G1 |  |             |      |  |                       |     |  |           |   |
| <b>HP</b>                | 2            |  |             |      |  |                       |     |  |           |   |
| <b>VOLTS</b>             | 230/460      |  |             |      |  |                       |     |  |           |   |
| <b>AMP</b>               | 5.8/2.9      |  |             |      |  |                       |     |  |           |   |
| <b>RPM</b>               | 1750         |  |             |      |  |                       |     |  |           |   |
| <b>FRAME</b>             | 145TCY       |  | <b>HZ</b>   | 60   |  | <b>PH</b>             | 3   |  |           |   |
| <b>SER.F.</b>            | 1.15         |  | <b>CODE</b> | L    |  | <b>DES</b>            | B   |  | <b>CL</b> | F |
| <b>NEMA-NOM-EFF</b>      | 86.5         |  | <b>PF</b>   | 75   |  |                       |     |  |           |   |
| <b>RATING</b>            | 40C AMB-CONT |  |             |      |  |                       |     |  |           |   |
| <b>CC</b>                | 010A         |  |             |      |  | <b>USABLE AT 208V</b> | 5.9 |  |           |   |
| <b>DE</b>                | 6205         |  | <b>ODE</b>  | 6205 |  |                       |     |  |           |   |
| <b>ENCL</b>              | TEFC         |  | <b>SN</b>   |      |  |                       |     |  |           |   |
|                          | IP44         |  |             |      |  |                       |     |  |           |   |

| Parts List  |  |          |
|-------------|--|----------|
| Part Number | Description                              | Quantity |
| SA199038    | SA 35X157P562G1                          | 1.000 EA |
| RA186389    | RA 35X157P562G1                          | 1.000 EA |
| NS2512A01   | INSULATOR, CONDUIT BOX X                 | 1.000 EA |
| 35CB4007    | KOBX,W/PRIMER (REL# 79097-49-C)          | 1.000 EA |
| 35GS3009    | GASKET, KOBX 35CB4006 (411881-15A)       | 1.000 EA |
| 51XB1016A05 | 10-16X5/16HX WA SL SR TYB (F/S)          | 2.000 EA |
| WD4101A13   | STEEL CAPLUG,BP-1 1/8, PLUG D3561S       | 1.000 EA |
| 11XW1032G06 | 10-32 X .38, TAPTITE II, HEX WSHR SLTD U | 1.000 EA |
| HW3001B02   | BRASS CUP WASHER W/GROUND SYMBOL TAB,    | 1.000 EA |
| 35EP3119A01 | SPL FREP TEFC 205 BRG                    | 1.000 EA |
| HW5100A05   | WVY WSHR F/205 & 304 BRGS                | 1.000 EA |
| 35EP3307F00 | MASTER DE,205 BRG,.998SH,#26 DRN         | 1.000 EA |
| 51XN1032A20 | 10-32 X 1 1/4 HX WS SL SR                | 2.000 EA |
| 35FH3004A01 | FAN COVER ASSY, BRAKE MTG                | 1.000 EA |
| 51XN1032A32 | 10-32 X 2 HX WS SL SR                    | 4.000 EA |
| HW1001A10   | WASHER, #10 SPLT LK, ZN X                | 4.000 EA |
| 35FN3003A01 | EXFN, PLASTIC, 5.88 OD, .626 ID          | 1.000 EA |
| 10XN3816K64 | 3/8-16X4 HX HD CAP SCREW, GRADE 5        | 4.000 EA |
| HW1001A38   | LOCKWASHER 3/8, ZINC PLT .688 OD, .382 I | 4.000 EA |
| BR2006B01   | DBSC SPLINED HUB 5/8 BOR                 | 1.000 EA |
| 35CB4519    | CB LID W/BLACK PRIMER                    | 1.000 EA |
| 35GS3019A01 | LEXIDE GASKET, FOR KOBX LID 35CB4519     | 1.000 EA |
| 51XW0832A07 | 8-32 X .44, TAPTITE II, HEX WSHR SLTD SE | 4.000 EA |
| WD4006A01   | WIRE JOINT,T&B RB-4 OR RB-44             | 1.000 EA |

| <b>Parts List (continued)</b> |  |                 |
|-------------------------------|--|-----------------|
| <b>Part Number</b>            | <b>Description</b>                       | <b>Quantity</b> |
| HW2501D13                     | KEY, 3/16 SQ X 1.375                     | 1.000 EA        |
| HA7000A04                     | KEY RETAINER 0.625 DIA SHAFTS            | 1.000 EA        |
| 85XU0407S04                   | 4X1/4 U DRIVE PIN STAINLESS              | 2.000 EA        |
| LB1419                        | CONNECTION LABEL                         | 1.000 EA        |
| MJ1000A02                     | GREASE, MOBIL POLYREX EM - 124047        | 0.050 LB        |
| MG1025N19                     | MUNSELL 8.5BG 3.57/2.0, GLOSS 30, B/G,   | 0.017 GA        |
| HA3100A13                     | THRUBOLT 10-32 X 7.750                   | 4.000 EA        |
| 46BK0304B01                   | DBSC-VP-10-MA-230/460 VAC                | 1.000 EA        |
| LC0005E01                     | CONN.DIA./WARNING LABEL (LC0005/LB1119N) | 1.000 EA        |
| MN416A01                      | TAG-INSTAL-MAINT no wire (1200/bx) 3/19  | 1.000 EA        |
| NP2934L                       | ALUM SUPER-E UL CSA-EEV CE CC PREM       | 1.000 EA        |
| G7PA1000                      | PKG GRP, PRINT PK1034A06                 | 1.000 EA        |
| PE-0000001                    | ZRTG PE ASSEMBLY                         | 1.000 EA        |

**AC Induction Motor Performance Data**

Record # 53347 - Typical performance - not guaranteed values

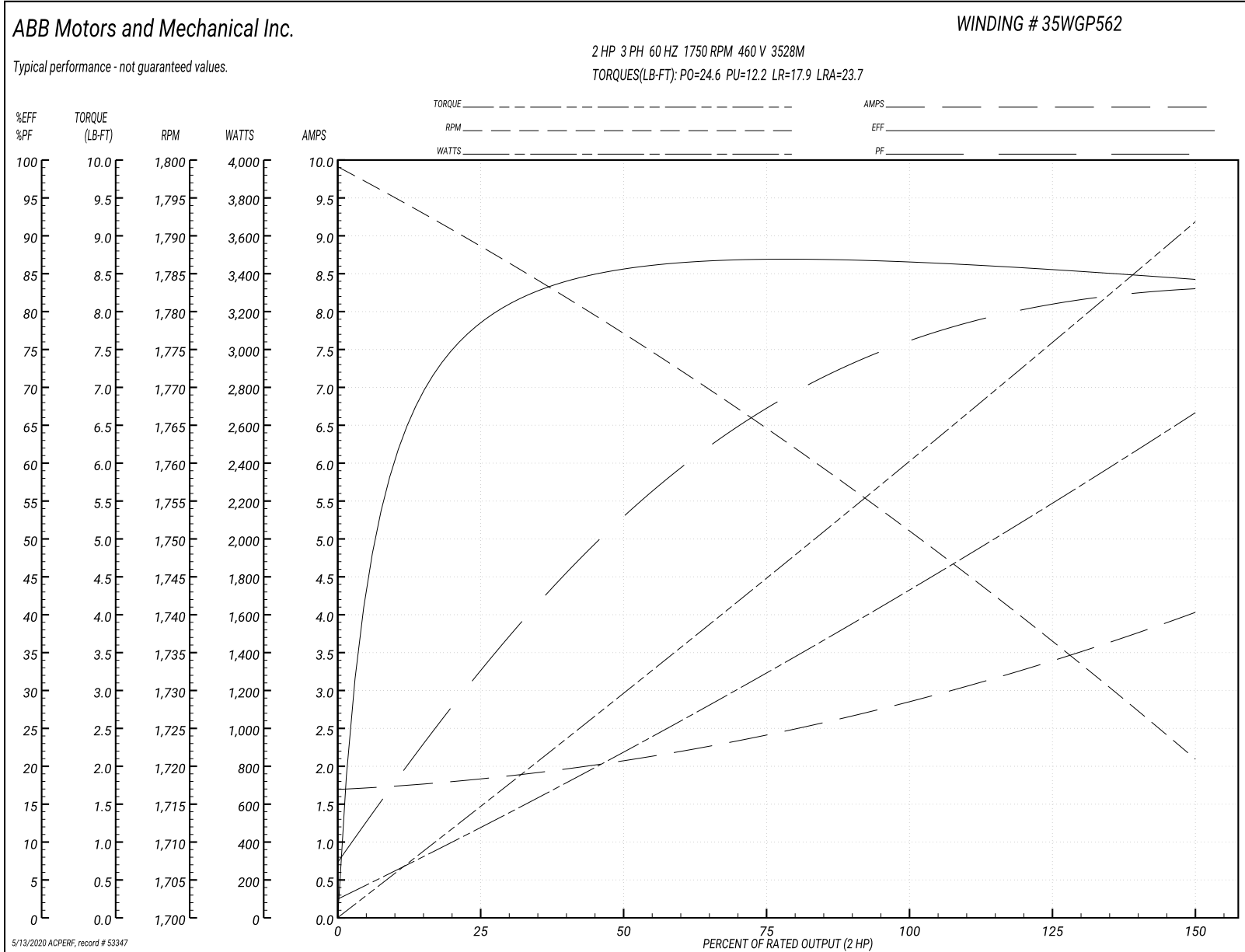
|                               |                    |                        |
|-------------------------------|--------------------|------------------------|
| <b>Winding:</b> 35WGP562-R016 | <b>Type:</b> 3528M | <b>Enclosure:</b> TEFC |
|-------------------------------|--------------------|------------------------|

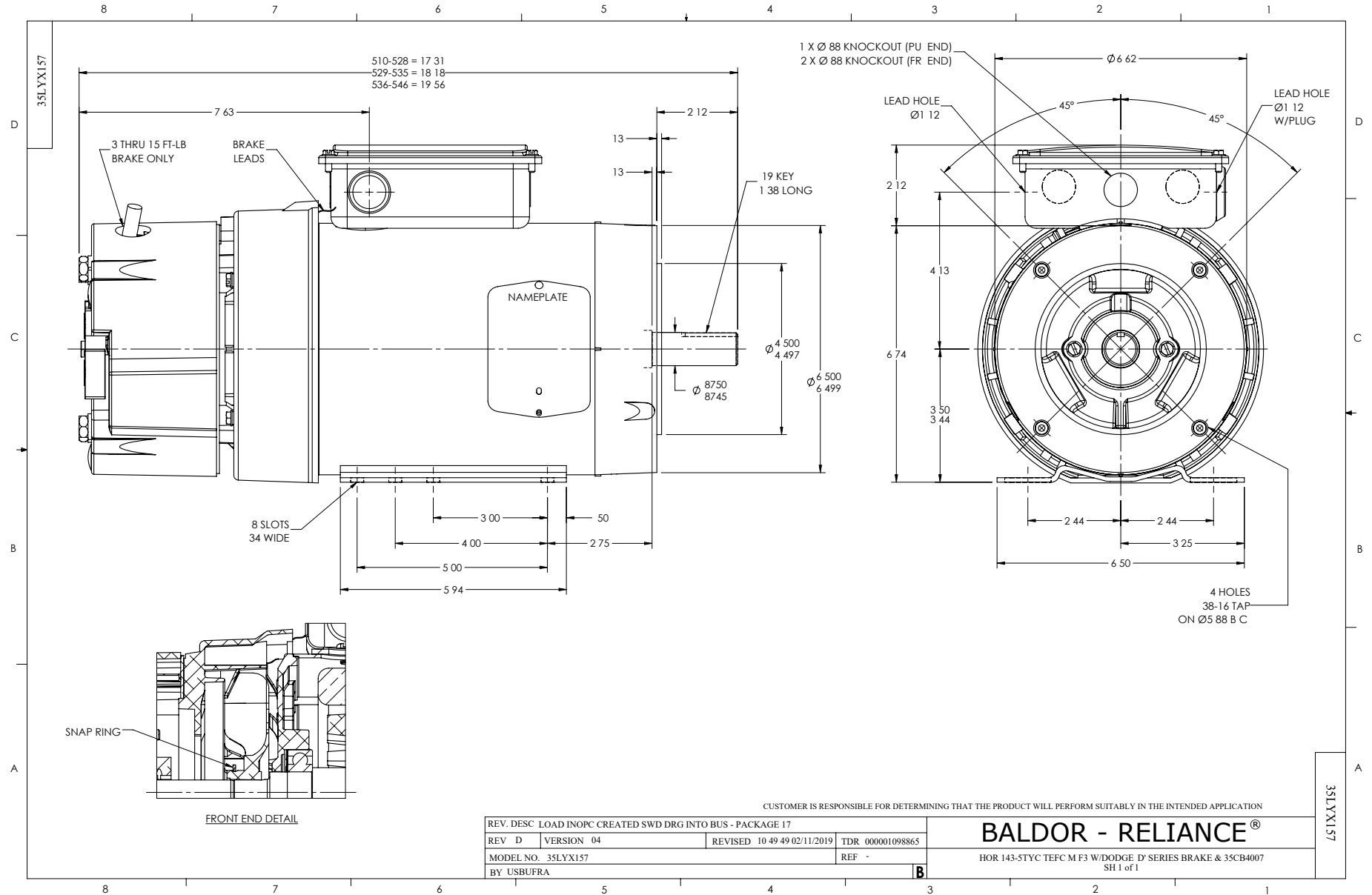
| Nameplate Data        |              |              |    | 460 V, 60 Hz:<br>High Voltage Connection |                          |
|-----------------------|--------------|--------------|----|--|--------------------------|
| Rated Output (HP)     | 2            |              |    | Full Load Torque                         | 6.01 LB-FT               |
| Volts                 | 230/460      |              |    | Start Configuration                      | direct on line           |
| Full Load Amps        | 5.8/2.9      |              |    | Breakdown Torque                         | 24.6 LB-FT               |
| R.P.M.                | 1750         |              |    | Pull-up Torque                           | 12.2 LB-FT               |
| Hz                    | 60           | Phase        | 3  | Locked-rotor Torque                      | 17.9 LB-FT               |
| NEMA Design Code      | B            | KVA Code     | L  | Starting Current                         | 23.7 A                   |
| Service Factor (S.F.) | 1.15         |              |    | No-load Current                          | 1.72 A                   |
| NEMA Nom. Eff.        | 86.5         | Power Factor | 75 | Line-line Res. @ 25°C                    | 7.66 Ω                   |
| Rating - Duty         | 40C AMB-CONT |              |    | Temp. Rise @ Rated Load                  | 75°C                     |
| S.F. Amps             |              |              |    | Temp. Rise @ S.F. Load                   | 90°C                     |
|                       |              |              |    | Locked-rotor Power Factor                | 50                       |
|                       |              |              |    | Rotor inertia                            | 0.165 LB-FT <sup>2</sup> |

Load Characteristics 460 V, 60 Hz, 2 HP

| % of Rated Load | 25   | 50   | 75   | 100  | 125  | 150  | S.F. |
|-----------------|------|------|------|------|------|------|------|
| Power Factor    | 33   | 53   | 67   | 75   | 80   | 84   | 78   |
| Efficiency      | 77.7 | 85.4 | 86.9 | 86.6 | 85.8 | 84.2 | 86.1 |
| Speed           | 1789 | 1778 | 1765 | 1751 | 1737 | 1721 | 1743 |
| Line amperes    | 1.8  | 2.04 | 2.39 | 2.88 | 3.39 | 4.01 | 3.19 |

Performance Graph at 460V, 60Hz, 2.0HP Typical performance - Not guaranteed values





CD0005

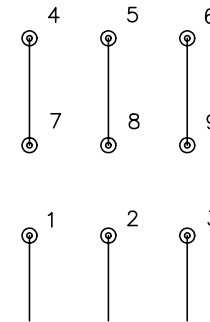


LOW VOLTAGE  
(2Y)



LINE

HIGH VOLTAGE  
(1Y)



LINE

NOTES:

1. INTERCHANGE ANY TWO LINE LEADS TO REVERSE ROTATION.
2. OPTIONAL THERMOSTATS ARE PROVIDED WHEN SPECIFIED.
3. ACTUAL NUMBER OF INTERNAL PARALLEL CIRCUITS MAY BE A MULTIPLE OF THOSE SHOWN ABOVE.
4. LEAD COLORS ARE OPTIONAL. LEADS MUST ALWAYS BE NUMBERED AS SHOWN.

|   |         |                         |              |
|---|---------|-------------------------|--------------|
| REV. DESC: REVISE TO SHOW OPTIONAL COLORS |         |                         |              |
| REV. LTR: E                               | BY: JLP | REVISED: 01/19/99 10:15 | TDR: 0171435 |
| 90000                                     |         | FILE: AAA00005140       | MDL: -       |
|   |         | MTL: -                  |              |

**BALDOR ELECTRIC Co.**

3PH, DV, 9 LEADS

CD0005